

CONSTRUCTION DRAWINGS

SYCAMORE HOTEL

CLUBHOUSE

LIVINGSTON RD
KISSIMMEE, FL

ENGINEERING
EPG ENGINEERING
(MECHANICAL AND ELECTRICAL)

1325 S. BUMBY AVE
ORLANDO, FLORIDA 32806
(407) 797-7799

ARCHITECT
BUMPUS AND ASSOCIATES, INC.
ARCHITECTURE-PLANNING-INTERIOR DESIGN

603 FRONT STREET
CELEBRATION, FLORIDA 34747
(407) 566-0200

ENGINEERING
BISHOP ENGINEERING COMPANY
(STRUCTURAL)

476 NEW BROAD STREET SUITE 150
ORLANDO, FL 32814
(407) 622-2477

BUMPUS AND ASSOCIATES, INC.
ARCHITECTURE - INTERIOR DESIGN
www.bumpusandassociates.com
603 FRONT STREET
CELEBRATION, FLORIDA 34747
Ph: (407) 566-0200
Fax: (407) 566-0222
AA 0008045

#	DESCRIPTION	DATE	BY

ABBREVIATIONS

A.B.	ANCHOR BOLT	MIN.	MINIMUM
ABV	ABOVE	MIRR	MIRROR
A.C.	AIR CONDITIONER	M.J.	MECHANICAL JOINT
ACI	AMERICAN CONCRETE INSTITUTE	MONO.	MONOLITHIC
A.F.F.	ABOVE FINISHED FLOOR	M.P.H.	MILES PER HOUR
AFI	ARC FAULT INTERRUPT	MWFRS	MAIN WIND FORCE RESISTING SYSTEMS
AH	AIR HANDLER	N/C	NOT APPLICABLE
ALUM	ALUMINUM	NDS	NATIONAL DESIGN SPECIFICATION
AMP	AMPERE	NO.	NUMBER
APA	THE ENGINEERED WOOD ASSOCIATION	NIC	NOT INCLUDED
ASCE	AMERICAN SOCIETY OF CIVIL ENGINEERS	NO.	NUMBER
A.T.R.	ALL THREADED ROD	N.T.S.	NOT TO SCALE
B	BOTTOM	OBS.	OBSURE
BLK.	BLOCK	O.C.	ON CENTER
BOT.	BOTTOM	O.H.D.	OVERHEAD DOOR
BRG	BEARING	OSB	ORIENTED STRAND BOARD
C&C	COMPONENTS AND CLADDING	P	PRESSURE
CANT	CANTILEVER	PAR	PARALLEL
CIR	CIRCLE	P.C.	PRECAST LINTEL
CLG	CEILING	PED	PEDESTAL
C.M.U.	CONCRETE MASONRY UNIT	PERP	PERPENDICULAR
C.O.	CLEAN OUT	PKT.	POCKET
COL.	COLUMN	PLT.	PLATE
COMP.	COMPACTED	PLUMB	PLUMBING
COND	CONDENSER	PLWD	PLYWOOD
CONT.	CONTINUOUS	PREFAB	PREFABRICATED
CPT.	CARPET	P.S.F.	POUNDS PER SQUARE FOOT
d	PENNY	P.S.I.	POUNDS PER SQUARE INCH
D	DRYER	P.T.	PRESSURE TREATED
DBL.	DOUBLE	PVC	POLYVINYL CHLORIDE
DECOR	DECORATIVE	QTY.	QUANTITY
DET.	DETAIL	R	ROD
DH	DOUBLE HUNG	REC	RECEPTACLE
DIA.	DIAMETER	REF.	REFERENCE
DISC.	DISCONNECT	REF.G.	REFRIGERATOR
D.L.	DEAD LOAD	REINF.	REINFORCED
DR	DOOR	RES.	RESIDENCE
DRY	DRYER	REQ'D	REQUIRED
EA.	EACH	RM	ROOM
E.B.	EYE BROW	RND	ROUND
ELECT	ELECTRICAL	R.O.	ROUGH OPENING
ELEV	ELEVATION	S	SHELF
EMBED.	EMBEDMENT	S.B.P.	SOIL BEARING PRESSURE
E.W.	EACH WAY	SD	SMOKE DETECTOR
EXT.	EXTERIOR	SECT.	SECTION
FBC	FLORIDA BUILDING CODE	SF.	SQUARE FOOT
FIN	FINISH	S.G.D.	SLIDING GLASS DOOR
FIX	FIXTURE	SH	SINGLE HUNG
F.G.	FIXED GLASS	SPECS	SPECIFICATIONS
FLR	FLOOR	S.P.F.	SPRUCE-PINE-FIR
FOUND.	FOUNDATION	SQ. FT.	SQUARE FOOT
FTG.	FOOTING	SW	SWITCH
GA	GYPSUM ASSOCIATION	S.W.C.	SHEAR WALL CONNECTOR
GAL.	GALLON	S.W.S.	SHEAR WALL SEGMENT
GALV.	GALVANIZED	S.Y.P.	SOUTHERN YELLOW PINE
G.B.	GLASS BLOCK	T	TOP
GDR	GIRDER	T&G	TONGUE AND GROOVE
GH	GROUND FAULT INTERRUPT	TEMP	TEMPERED
GLS	GLASS	THK.	THICK
GYP.	GYPSUM	T-NAIL	TOENAIL
HB	HOSE BIB	TV.	TELEVISION
HDR	HEADER	TYP.	TYPICAL
HGT	HEIGHT	U	URNAL
HOR	HORIZONTAL	UL	UNDERWRITERS LABORATORIES, INC.
HT	HEIGHT	U.N.O.	UNLESS NOTED OTHERWISE
HVAC	HEATING, VENTILATING AND AIR CONDITIONING	U.S.G.	UNITED STATES GYPSUM COMPANY
INCAND.	INCANDESCENT	V	VOLTS
INSUL.	INSULATION	VENT.	VENTILATED
KD	KILN DRIED LUMBER	VIN	VINYL
L	LAVATORY	VISQ.	VISQUEEN
LBS.	POUNDS	VOL	VOLUME
L.L.	LIVE LOAD	W	WASHER
LT	LAUNDRY TUB	W/	WITH
LVL	LAMINATED VENEER LUMBER	W.C.	WATER CLOSET
M	MASTER	WD	WOOD
MANUF.	MANUFACTURER	WDW	WINDOW
MAX.	MAXIMUM	WH	WATER HEATER
MC	MEDICINE CABINET	W.I.C.	WALK-IN CLOSET
		WP	WATER PROOF
		W.W.F.	WELDED WIRE FRAME

CODE COMPLIANCE SUMMARY

FLORIDA BUILDING CODE - 6TH EDITION (2017)
FLORIDA BUILDING CODE EXISTING BUILDINGS - 6TH EDITION (2017)
FLORIDA ACCESSIBILITY CODE - 6TH EDITION (2017)
FLORIDA PLUMBING CODE - 6TH EDITION (2017)
FLORIDA MECHANICAL CODE - 6TH EDITION (2017)
FLORIDA FIRE PREVENTION CODE - 6TH EDITION (2017)
NATIONAL ELECTRIC CODE 2014

STRUCTURAL NOTES:

DESIGN LOADS:

FLOOR: 50 PSF

ROOF: 20 PSF

10 PSF

WIND: 140 MPH

INTERIOR PRESSURE

COEFFICIENT: 0.18

WIND EXPOSURE: B(ENCLOSED)

RISK CATEGORY: II

WINDOW DESIGN

POSITIVE PRESSURE 35.3 PSF

NEGATIVE PRESSURE -47.2 PSF

DOORS

POSITIVE PRESSURE 33.7 PSF

NEGATIVE PRESSURE -44 PSF

OCCUPANCY: MIXED (A-3 / B)

CONSTRUCTION: TYPE I-B

SPRINKLERED

W/ FIRE ALARM

10,142 S.F. FIRST FLOOR

9,684 S.F. SECOND FLOOR

2,155 S.F. ROOF

TOTAL S.F.:

ALLOWABLE S.F.:

ACTUAL STORIES: TWO

ALLOWABLE STORIES: THREE

ACTUAL HEIGHT: 30'

ALLOWABLE HEIGHT: 75'

DISTANCE FROM NEAREST

ASSUMED PROPERTY LINE: ??

REQUIRED FIRE RATING: ?

ACTUAL DISTANCE TO EXIT: ???

MAXIMUM DISTANCE TO EXIT: 250'

OCCUPANCY LOAD CALCULATION:

OFFICE Ch. 10

SEATING Ch. 10

TOTAL ?

FIRE RATED PARTITIONS

FBC: 1009.3

FPFC: 101.28.3.6.1.3, 101.28.3.7.2, 101.8.6.4

CORRIDOR 1/2 HOUR

GUEST ROOM SEPERATION 1/2 HOUR

ELEVATOR SHAFT 2 HOUR

ELEVATOR EQUIPMENT 2 HOUR

FIRE PUMP 2 HOUR

STAIR WELL 2 HOUR

SHAFT WALLS 2 HOUR

SEE LIFE SAFETY PLAN, SHEET A5.1

PLUMBING FIXTURE CALCULATIONS

? ? OCCUPANTS

MEN		WOMEN	
REQUIRED	PROVIDED	REQUIRED	PROVIDED
WC	LAV	WC	LAV
1	1	1	1

DF PLUMB 403.1

SS 403.1

ARCHITECTURAL SHEETS

SITE PLAN	2
COVER SHEET	A0
ELEVATIONS	A1.1
FLOOR PLAN 1	A2.1
FLOOR PLAN 2	A2.2
FLOOR PLAN ROOF	A2.3
FLOOR PLAN - 1 PHASE 2	A2.4
FLOOR PLAN - 2 PHASE 2	A2.5
FLOOR PLAN - ROOF PHASE 2	A2.6
FOUNDATION PLAN	A3.1
HEADER PLAN	A4.1
ROOF PLAN	A5.1
REFLECTED CEILING PLAN	A6.1
DETAIL PLAN	A7.1
BUILDING SECTIONS	A8.1
LIFE SAFETY PLAN	A9.1
1ST FLOOR STRUCTURAL	S3.1
SECOND FLOOR STRUCTURAL	S3.2
ROOF STRUCTURAL	S3.3
HIGH ROOF STRUCTURAL	S3.4

PLUMBING SHEETS

FLOOR PLAN	P-1
RISER DIAGRAM	P-2
NOTES & SCHEDULES	P-3
DETAILS	P-4

MECHANICAL SHEETS

FLOOR PLAN	M-1
SCHEDULES & NOTES	M-2
DETAILS	M-3

ELECTRICAL SHEETS

POWER PLAN	E-1
ELECTRICAL PLAN	E-2
LIGHTING SCHEDULES	E-3
POWER SCHEDULES	E-4
DETAILS	E-5
NOTES	E-6

SYCAMORE HOTEL
CLUBHOUSE
LIVINGSTON RD
KISSIMMEE, FL

DRWN:GAA APVD:DLB

DATE:
2-3-2020
SCALE:
As Shown
JOB NUMBER:
19164
SHEET:

A0

0.1 1 2 3 4 4.1 5 5.1 6 6.2 7.1 8 8.1 9 10 11



40' - 0" TOP ROOF
30' - 0" ROOF
15' - 0" SECOND FLOOR
0" FIRST FLOOR

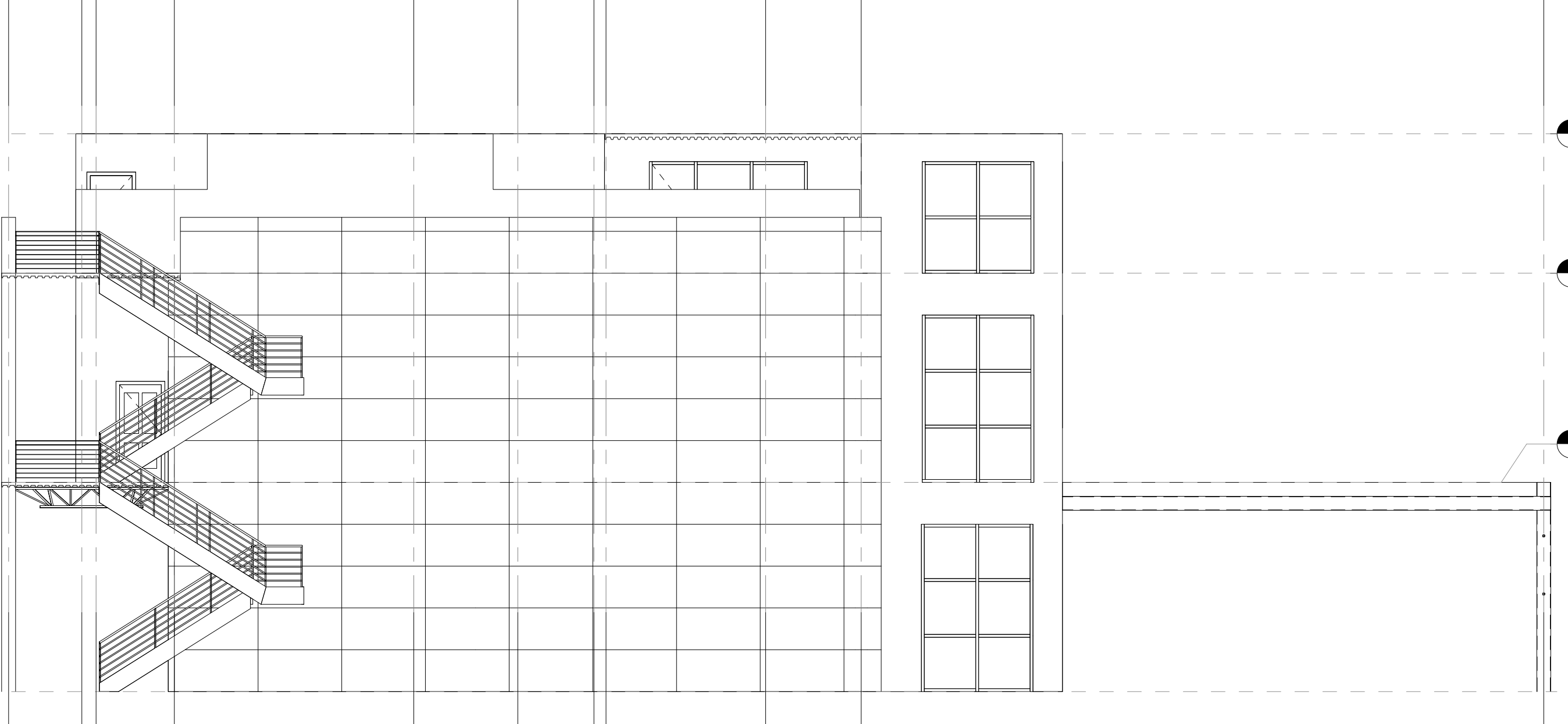
11 10 9 8.1 8 7.1 6.2 6 5.1 5 4.1 4 3 2 1

SOUTH - NEW
SCALE: 1/8" = 1'-0"

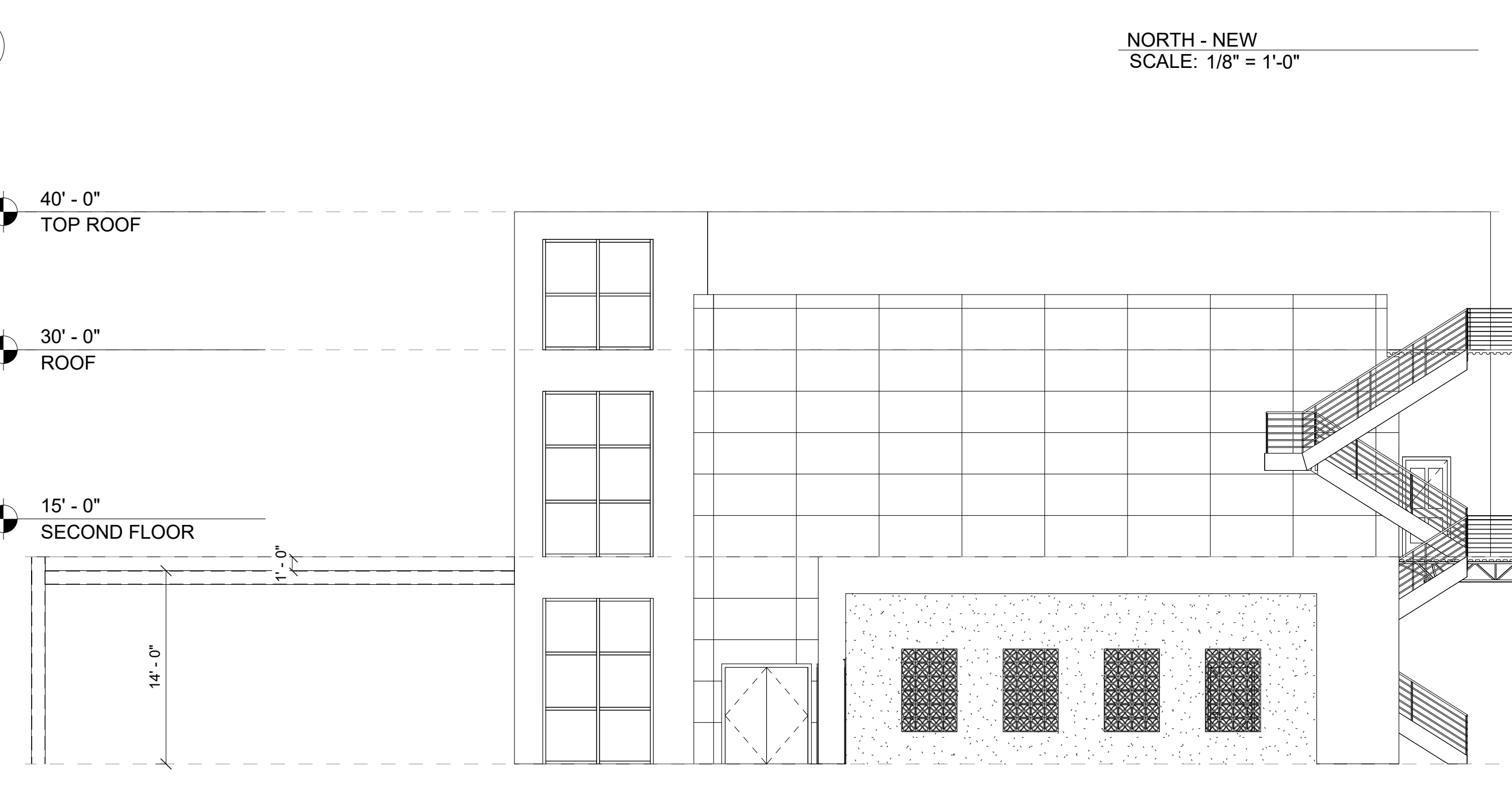


40' - 0" TOP ROOF
30' - 0" ROOF
15' - 0" SECOND FLOOR
0" FIRST FLOOR

K JH G F B.2 E C B A



EAST - NEW
SCALE: 1/8" = 1'-0"



WEST - NEW
SCALE: 1/8" = 1'-0"

NORTH - NEW
SCALE: 1/8" = 1'-0"

DESCRIPTION	DATE	BY

BUMPUS AND ASSOCIATES, INC.
 ARCHITECTURE - INTERIOR DESIGN
 www.BUMPUSANDASSOCIATES.com
 Ph: (407) 566-0200
 Fax: (407) 566-0222
 AR 0008045
 603 FRONT STREET
 CELEBRATION, FLORIDA 34747
 AA CM20151

Approved By: _____
 Daniel L. Bumpus
 AR 0008045
 Date: _____

**SYCAMORE HOTEL
 CLUBHOUSE**
 KISSIMMEE, FL

DRWN:SEC	APVD:DLB
DATE:	10-22-19
SCALE:	AS SHOWN
JOB NUMBER:	19164
SHEET:	

A1.1

A

B

C

D

B.2

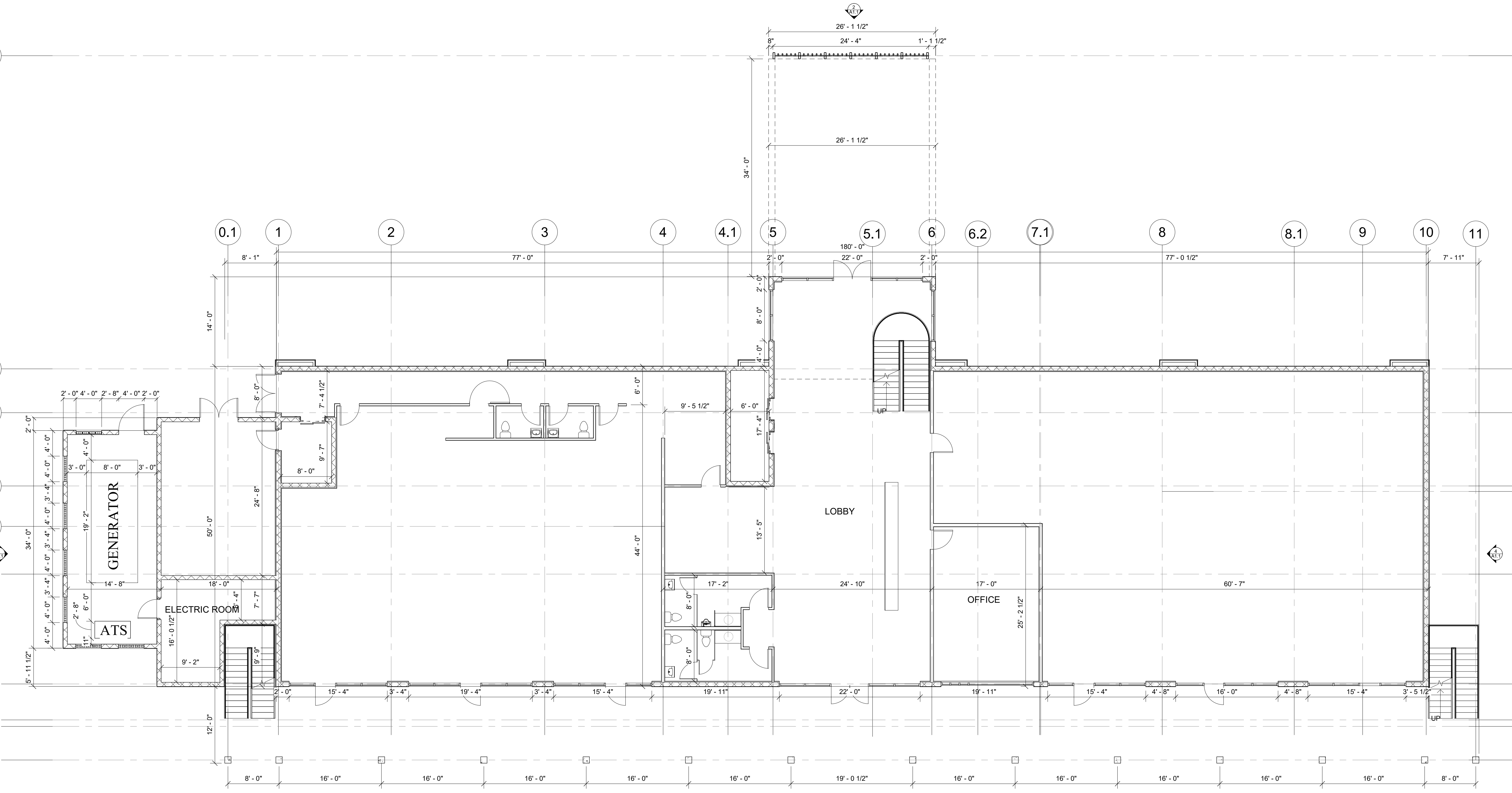
E

F

G

H

K



1 FIRST FLOOR
 A2.1 SCALE: 1/8" = 1'-0"

DESCRIPTION	DATE	BY

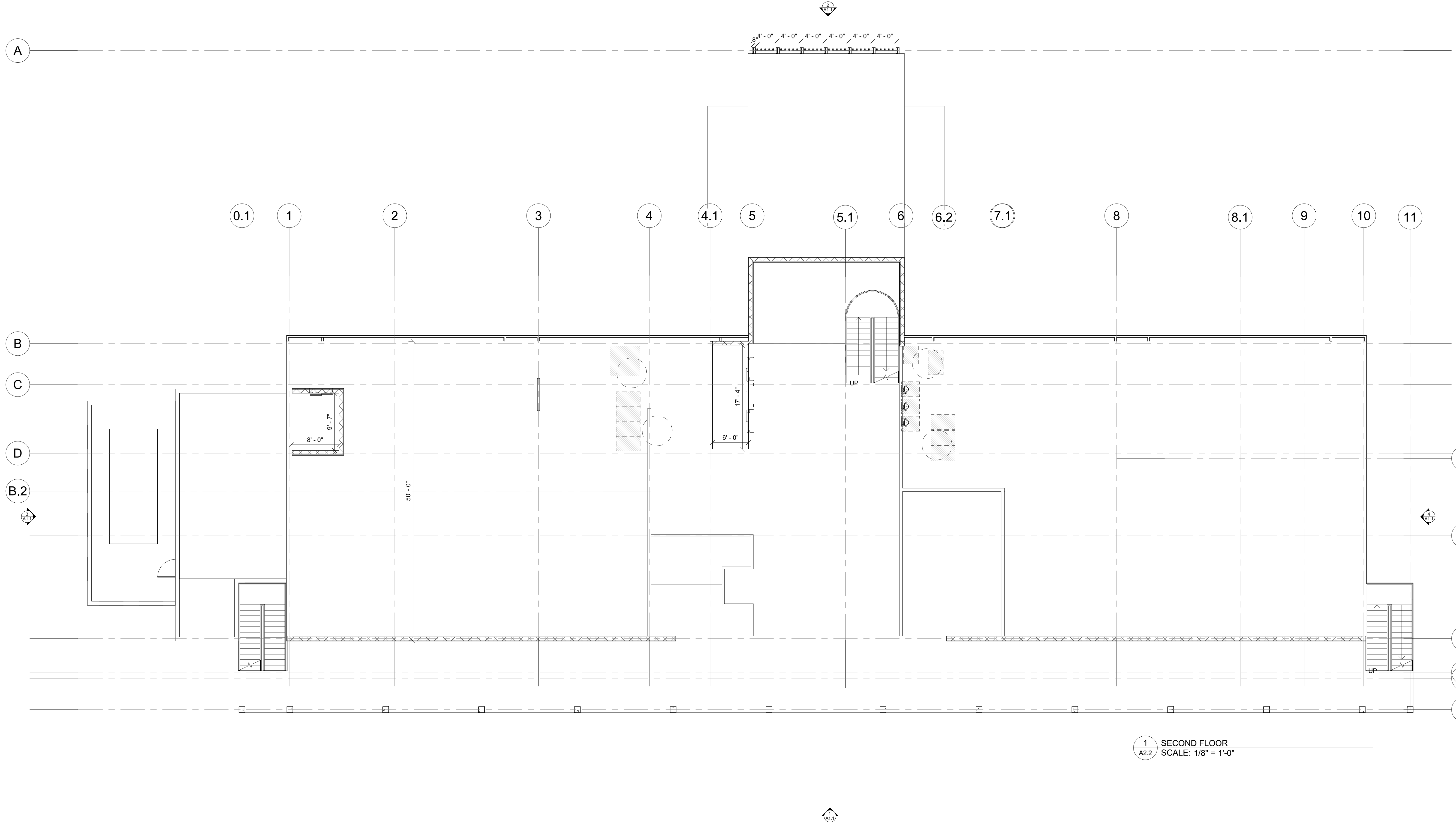
BUMPUS AND ASSOCIATES, INC.
 ARCHITECTURE - INTERIOR DESIGN
 www.BUMPUSANDASSOCIATES.com
 Ph: (407) 566-0200
 Fax: (407) 566-0222
 AA CM20151

Approved By: _____
 Daniel L. Bumpus
 AR 0008045
 Date _____

**SYCAMORE HOTEL
 CLUBHOUSE**
 KISSIMMEE, FL

DRWN: BAA	APVD: DLB
DATE: 10-22-19	
SCALE: AS SHOWN	
JOB NUMBER: 19164	
SHEET:	

A2.1



1 SECOND FLOOR
A2.2 SCALE: 1/8" = 1'-0"

DESCRIPTION	DATE	BY

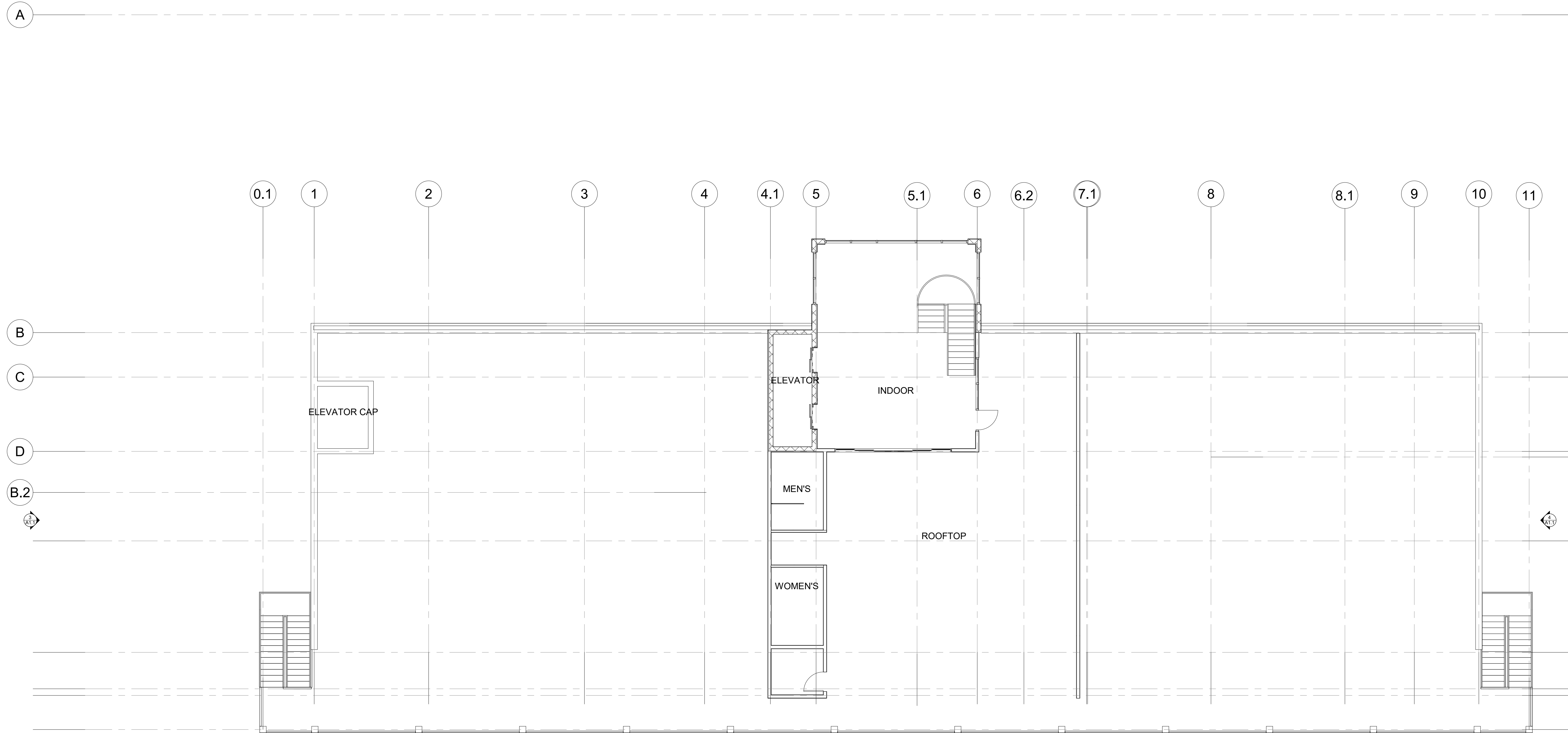
BUMPUS AND ASSOCIATES, INC.
ARCHITECTURE - INTERIOR DESIGN
www.BUMPUSANDASSOCIATES.com
Ph: (407) 566-0200
Fax: (407) 566-0222
AR 0008045
603 FRONT STREET
CELEBRATION, FLORIDA 34747
AA CM20151

Approved By:
Daniel L. Bumpus
AR 0008045
Date _____

**SYCAMORE HOTEL
CLUBHOUSE**
KISSIMMEE, FL

DRWN: Author	APVD: Approve
DATE:	10-22-19
SCALE:	AS SHOWN
JOB NUMBER:	19164
SHEET:	

A2.2



1 ROOF
A2.3 SCALE: 1/8" = 1'-0"

DESCRIPTION	DATE	BY

BUMPUS AND ASSOCIATES, INC.
 ARCHITECTURE - INTERIOR DESIGN
 www.BUMPUSANDASSOCIATES.com
 Ph: (407) 566-0200
 Fax: (407) 566-0222
 AR 0008045
 603 FRONT STREET
 CELEBRATION, FLORIDA 34747
 AA CM20151

Approved By:
 Daniel L. Bumpus
 AR 0008045
 Date _____

**SYCAMORE HOTEL
 CLUBHOUSE**
 KISSIMMEE, FL

DRWN: Author	APVD: Approve
DATE:	10-22-19
SCALE:	AS SHOWN
JOB NUMBER:	19164
SHEET:	

A2.3

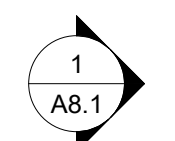
A

B

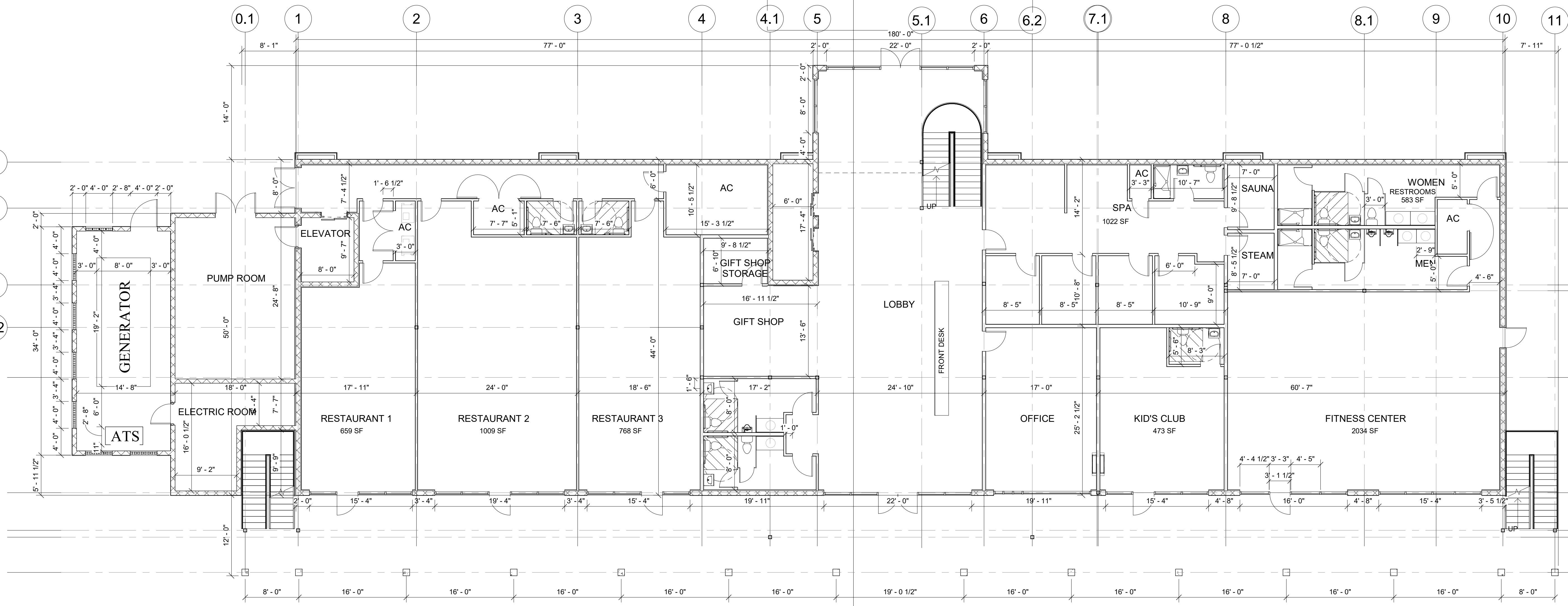
C

D

B.2



1ST FLOOR AREAS				
Name	Area	INDOOR SEATS	OUTDOOR SEATS	TOTAL SEATS
ACTIVITY ROOM	4142 SF		88	396
BAR	1308 SF		22	108
FITNESS CENTER	1314 SF			
GIFT SHOP	316 SF			
KID'S CLUB	473 SF			
RESTAURANT 1	659 SF	40		40
RESTAURANT 2	1009 SF	54		54
RESTAURANT 3	737 SF	41		41
RESTAURANT 4	3572 SF		77	267
RESTROOMS	577 SF			
ROOFTOP BAR	2437 SF	40	144	184
SPA	1022 SF			



1 FIRST FLOOR . NOT TO SCALE
A2.4

DESCRIPTION	DATE	BY

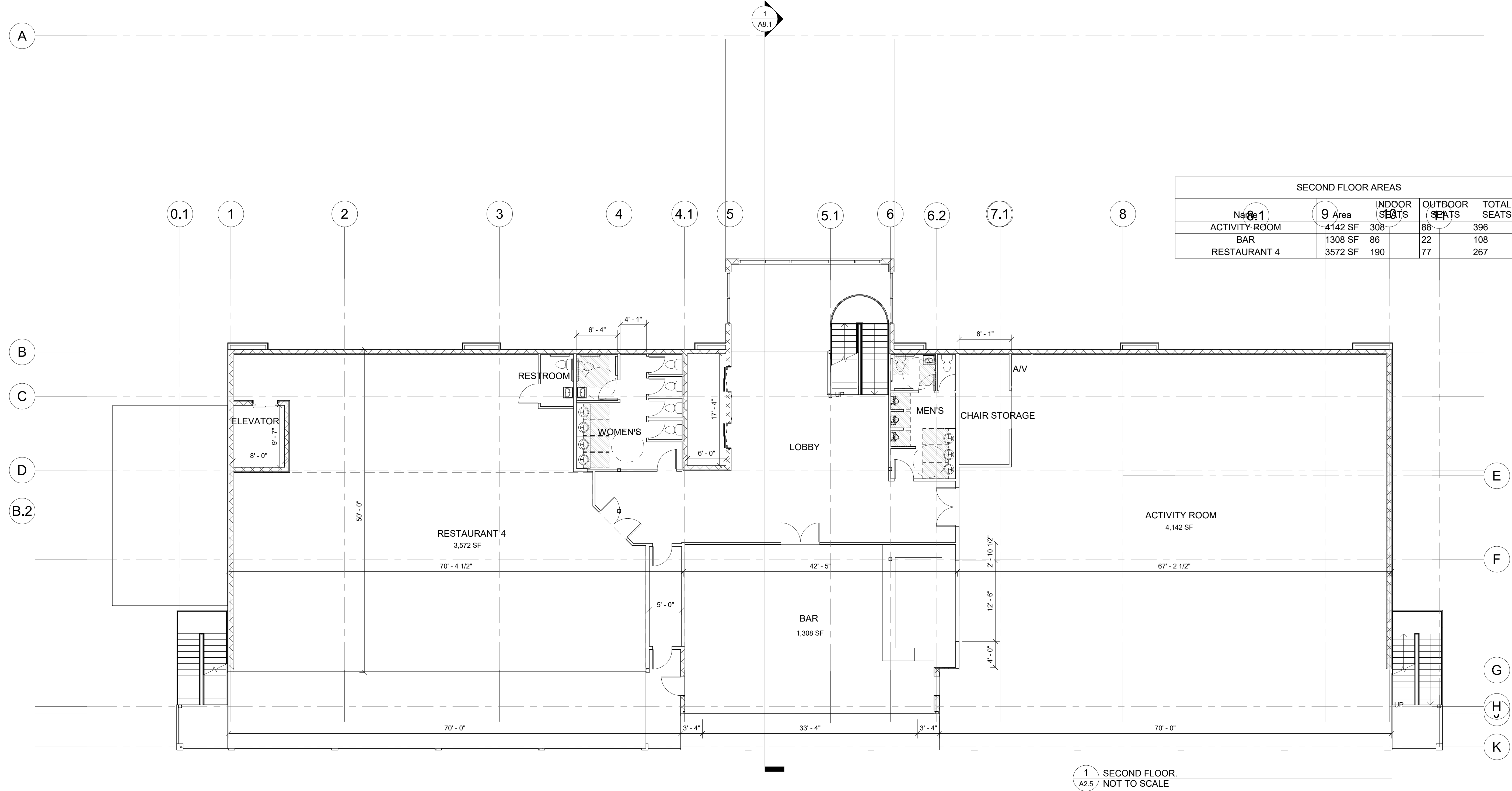
BUMPUS AND ASSOCIATES, INC.
 ARCHITECTURE - INTERIOR DESIGN
 www.BUMPUSANDASSOCIATES.com
 Ph: (407) 566-0200
 Fax: (407) 566-0222
 AR 000804
 603 FRONT STREET
 CELEBRATION, FLORIDA 34747
 AA CM20151

Approved By: _____
 Daniel L. Bumpus
 AR 0008045
 Date _____

SYCAMORE HOTEL CLUBHOUSE
 KISSIMMEE, FL

DRWN: Author APVD: Approve
 DATE: 10-22-19
 SCALE: AS SHOWN
 JOB NUMBER: 19164
 SHEET:

A2.4



SECOND FLOOR AREAS				
Name	Area	INDOOR SEATS	OUTDOOR SEATS	TOTAL SEATS
ACTIVITY ROOM	4142 SF	308	88	396
BAR	1308 SF	86	22	108
RESTAURANT 4	3572 SF	190	77	267

DESCRIPTION	DATE	BY

BUMPUS AND ASSOCIATES, INC.
 ARCHITECTURE - INTERIOR DESIGN
 www.BUMPUSANDASSOCIATES.com
 Ph: (407) 566-0200
 Fax: (407) 566-0222
 AR 0008045
 603 FRONT STREET
 CELEBRATION, FLORIDA 34747
 AA CM20151

Approved By: _____
 Daniel L. Bumpus
 AR 0008045
 Date: _____

**SYCAMORE HOTEL
 CLUBHOUSE**
 KISSIMMEE, FL

DRWN: Author APVD: Approve
 DATE:
 10-22-19
 SCALE:
 AS SHOWN
 JOB NUMBER:
 19164
 SHEET:

A2.5

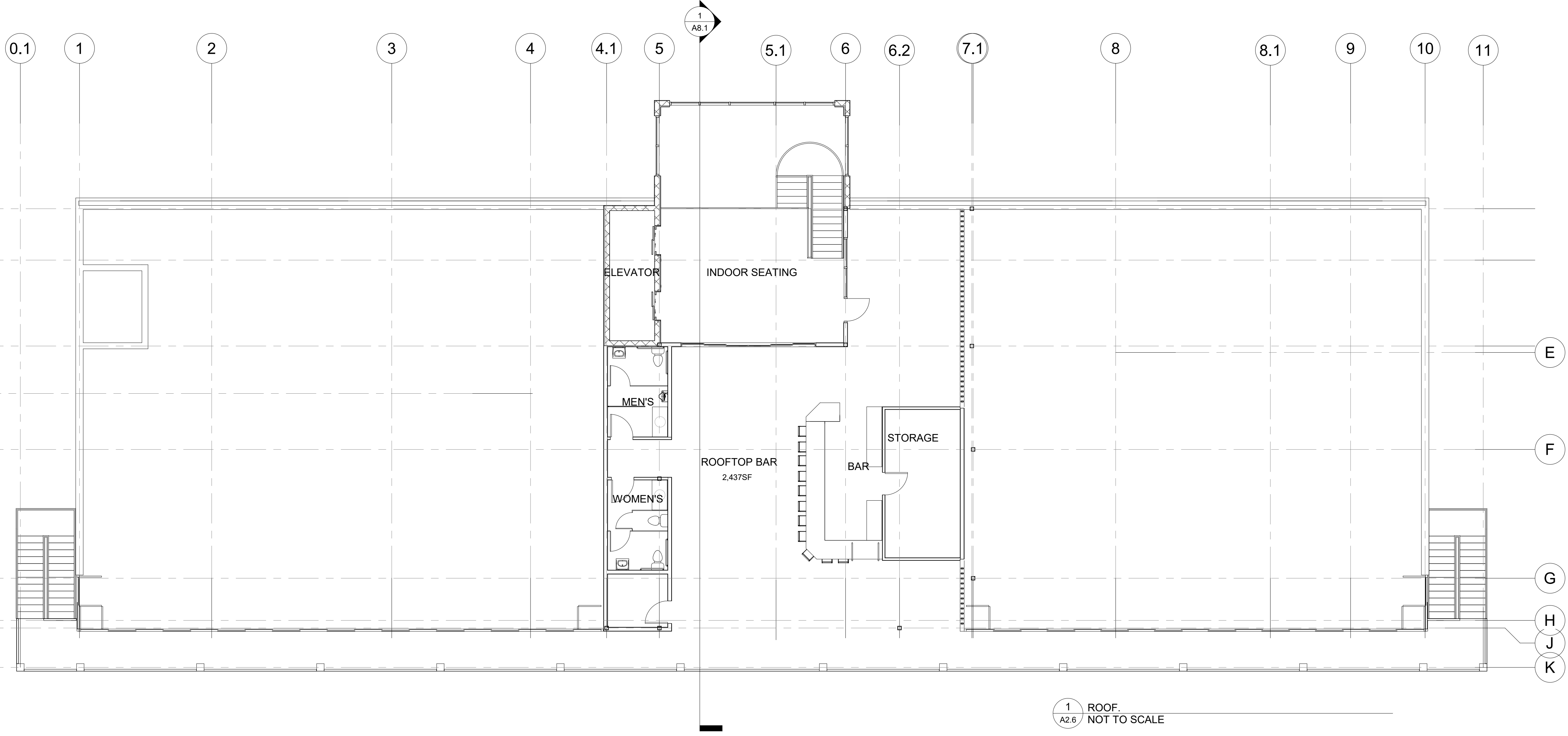
A

B

C

D

B.2



ROOF TOP AREAS					
NAME	Area	FLOOR	INDOOR SEATS	OUTDOOR	TOTAL SEATS
ROOFTOP BAR	2437 SF	3	40	144	184

1 ROOF.
A2.6 NOT TO SCALE

DESCRIPTION	DATE	BY

BUMPUS AND ASSOCIATES, INC.
 ARCHITECTURE - INTERIOR DESIGN
 www.BUMPUSANDASSOCIATES.com
 Ph: (407) 566-0200
 Fax: (407) 566-0222
 AA CM20151 AR 0008045

Approved By: _____
 Daniel L. Bumpus
 AR 0008045
 Date _____

**SYCAMORE HOTEL
 CLUBHOUSE**
 KISSIMMEE, FL

DRWN: Author	APVD: Approve
DATE:	10-22-19
SCALE:	AS SHOWN
JOB NUMBER:	19164
SHEET:	

A2.6

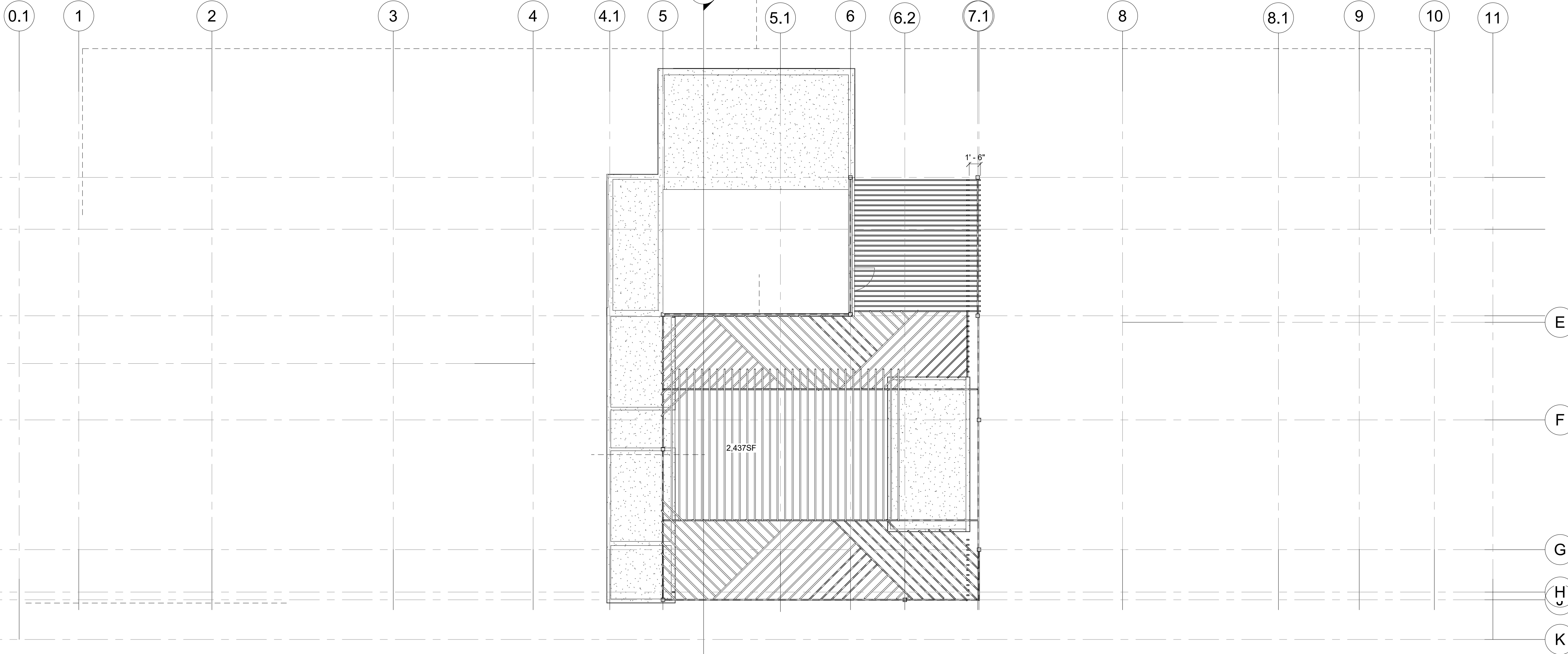
A

B

C

D

B.2



1 ROOF PLAN
 A5.1 SCALE: 1/8" = 1'-0"

DESCRIPTION	DATE	BY

BUMPUS AND ASSOCIATES, INC.
 ARCHITECTURE - INTERIOR DESIGN
 www.BUMPUSANDASSOCIATES.com
 Ph: (407) 566-0200
 Fax: (407) 566-0222
 603 FRONT STREET
 CELEBRATION, FLORIDA 34747
 AA CM20151
 AR 0008045

Approved By:
 Daniel L. Bumpus
 AR 0008045
 Date _____

**SYCAMORE HOTEL
 CLUBHOUSE**
 KISSIMMEE, FL

DRWN: BAA APVD: DLB
 DATE:
 10-22-19
 SCALE:
 AS SHOWN
 JOB NUMBER:
 19164
 SHEET:

A5.1