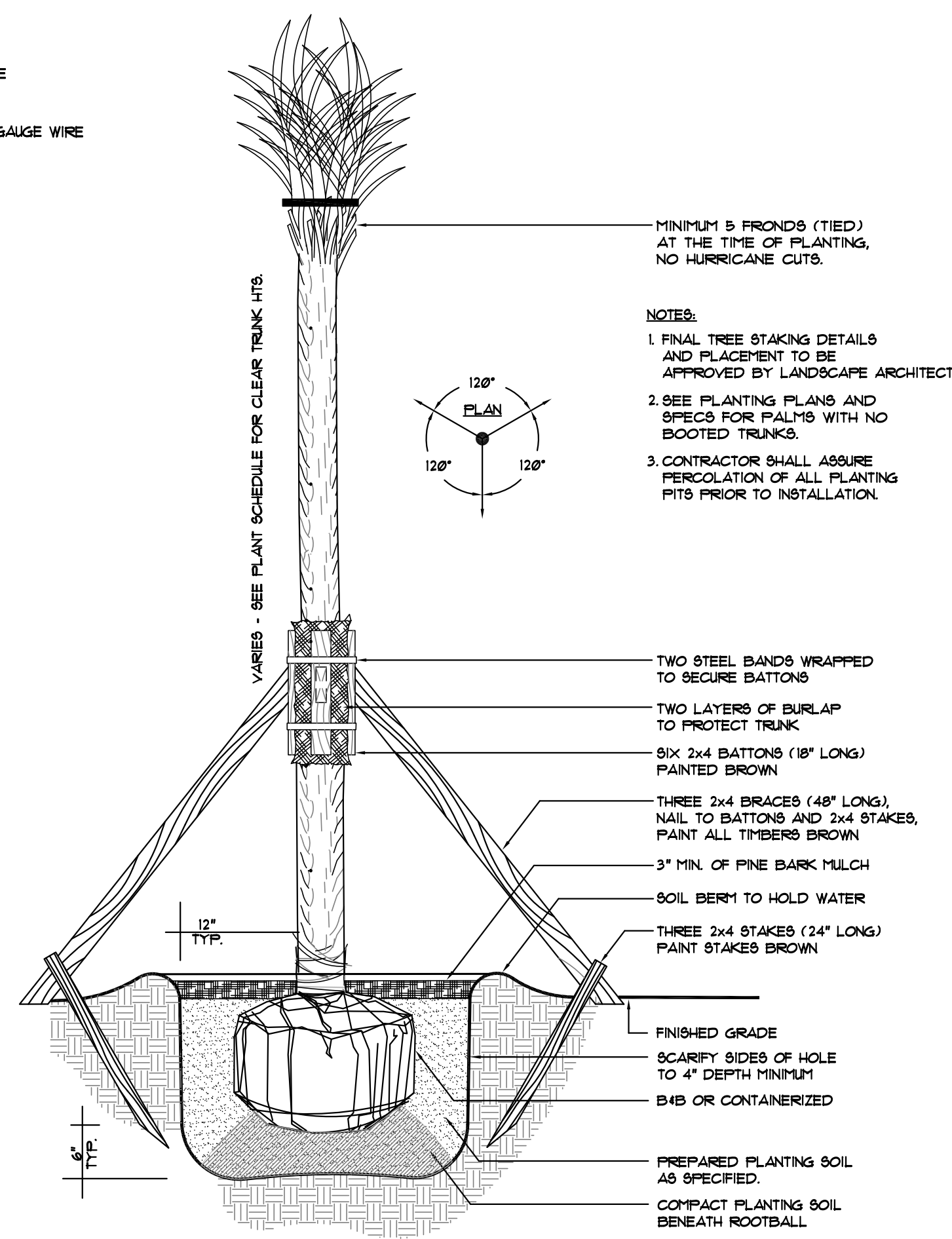


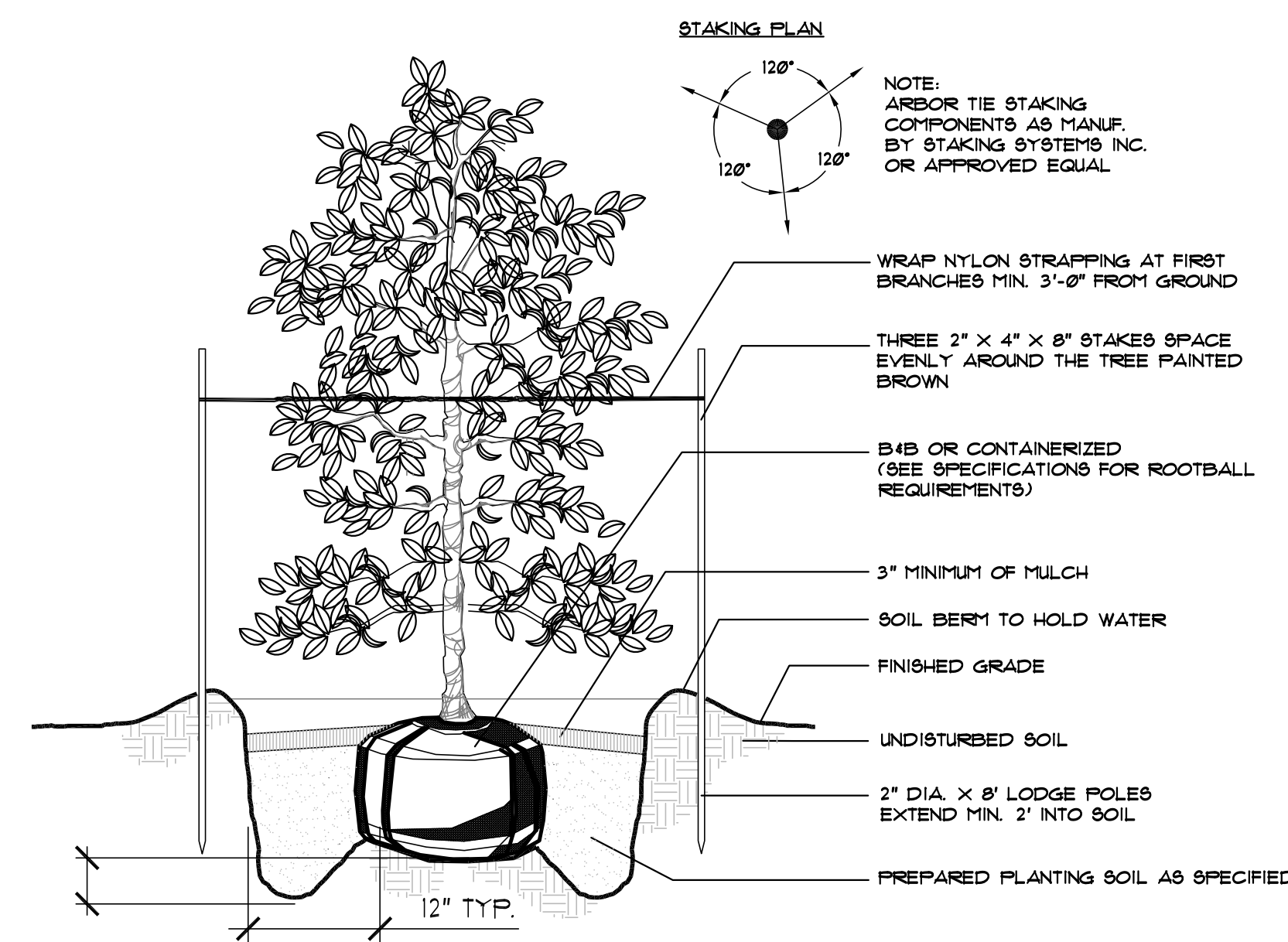
LARGE TREE PLANTING DETAIL

NOT TO SCALE 1 LD-1



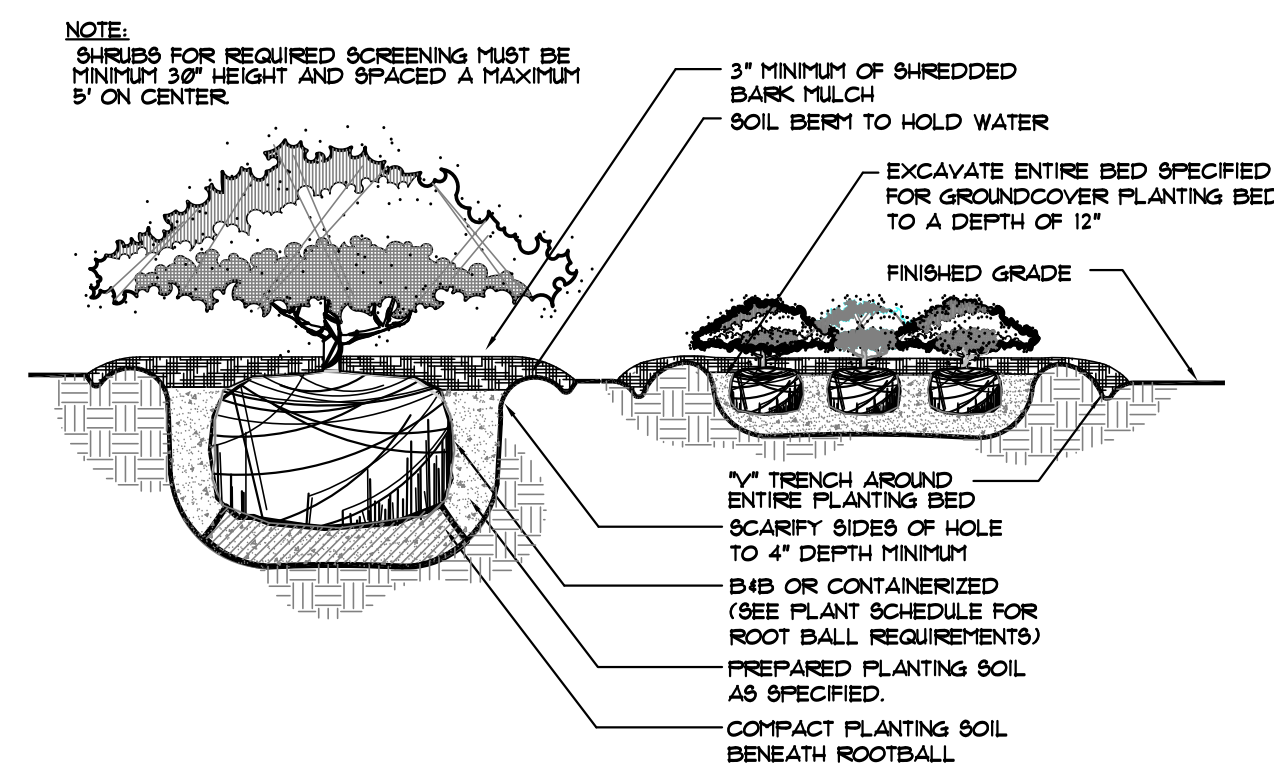
PALM TREE PLANTING DETAIL

NOT TO SCALE 4 LD-1



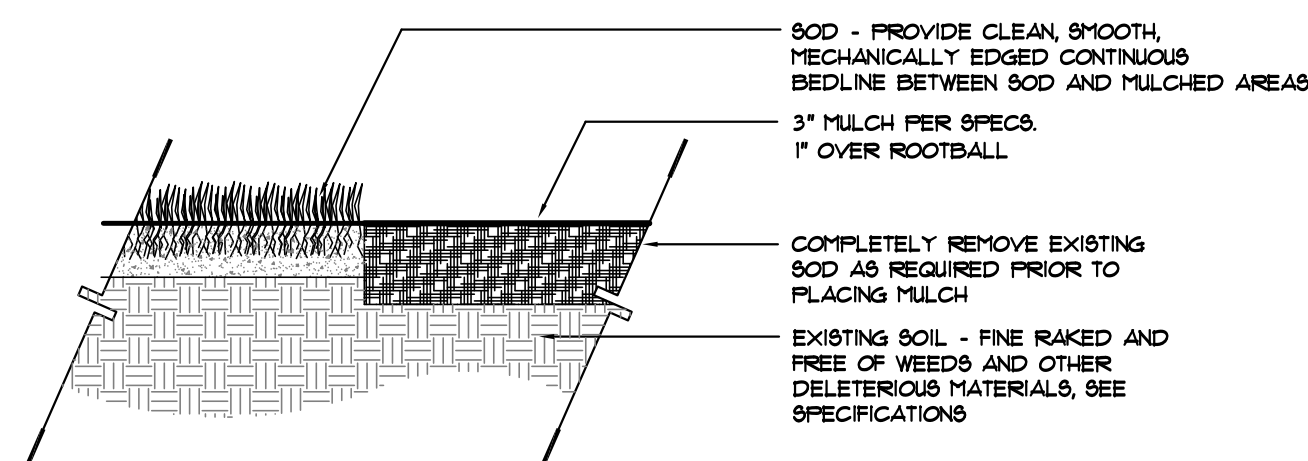
UNDERSTORY TREE PLANTING DETAIL

NOT TO SCALE 2 LD-1



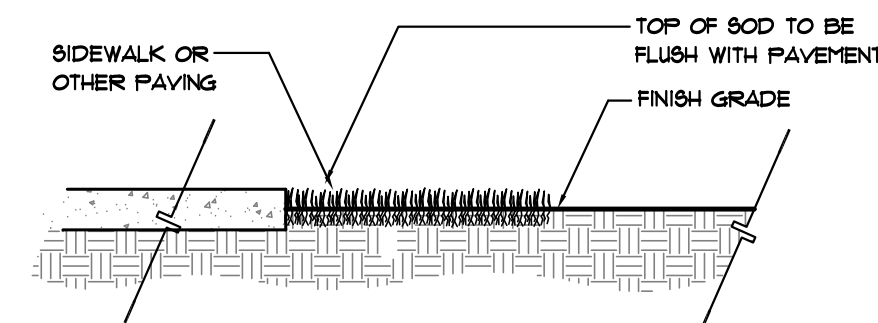
SHRUBS AND GROUND COVER PLANTING DETAIL

NOT TO SCALE 5 LD-01



SOD PLACEMENT ADJ. TO MULCH

NOT TO SCALE 3 LD-1



SOD PLACEMENT ADJ. TO PAVEMENT

NOT TO SCALE 6 LD-1

PLANT LIST:

| TREES | | | | | |
|-------|---------|-----------------------------------|-------------------------|--|------------------|
| QTY. | ABBREV. | BOTANICAL NAME | COMMON NAME | SIZE & SPECIFICATION | FLORIDA FRIENDLY |
| 18 | IN5/65 | Ilex x Nellie R. Stevens' | Nellie R. Stevens Holly | 65 gal., 7'-8' ht., 4'-5' apr., 2" cal. | YES |
| 12 | IOL/30 | Ilex 'Cona' Oakleaf | Oak Leaf Holly | 30 gal., 5'-6' ht., 4'-5' apr., 2" cal. | YES |
| 23 | LJ/65 | Ligustrum japonicum | Japanese Privet | 65 gal., 8'-10' ht., 5'-6' apr., 2" cal. | YES |
| 41 | MGL/65 | Magnolia grandiflora 'Little Gem' | Little Gem Magnolia | 65 gal., 2 1/2" cal. | YES |
| 73 | PE/30 | Pinus elliotii | Slash Pine | 30 gal., 8'-10' x 4'-5', 2" cal. | YES |
| 2 | PO/100 | Platanus occidentalis | Sycamore Tree | 100 gal., 3" min. cal. | YES |
| 59 | QV/100 | Quercus virginiana | Live Oak | 100 gal., 3" min. cal. | YES |
| 38 | QVH/100 | Quercus virginiana High Rise' | High Rise' Live Oak | 100 gal., 3" min. cal. | YES |
| 16 | UP/100 | Ulmus parvifolia | Chinese Elm | 100 gal., 3" min. cal. | YES |

| PALMS | | | | | |
|-------|---------|----------------------|------------------|---|------------------|
| QTY. | ABBREV. | BOTANICAL NAME | COMMON NAME | SIZE & SPECIFICATION | FLORIDA FRIENDLY |
| 38 | PR/5 | Phoenix roborlenii | Pinyon Date Palm | 15 gal., 3'-4' x 2'-3', multi-stemmed specimen. | YES |
| 17 | PS/12 | Phoenix sylvestris | Sylvester Palm | Min. 12" c.t. ht, matched, specimen quality | YES |
| 91 | SP | Sabal palmetto | Sabal Palm | Vary c.t. hts. of 10', 12' and 14' | YES |
| 81 | WR | Washingtonia robusta | Washington Palm | Vary c.t. hts. of 10', 12' and 14' | YES |

| SHRUBS & GROUNDCOVERS | | | | | |
|-----------------------|---------|------------------------------------|-----------------------|---|------------------|
| QTY. | ABBREV. | BOTANICAL NAME | COMMON NAME | SIZE & SPECIFICATION | FLORIDA FRIENDLY |
| 1900 | ANN/1 | Annuals | Annuals | 1 gal., 5-7 leaves, 12" o.c. | VARIES |
| 24 | BM/25 | Bambusa multiplex "Golden Goddess" | Golden Goddess Bamboo | 25 gal., 6'-8', full to ground. | |
| 86 | DI/1 | Dietsa iridoides | African Iris White | 1 gal., 4-5 ppp., full, 18" o.c. | YES |
| 826 | IV/3 | Ilex vomitoria "Schillings" | Schillings Holly | 3 gal., 15"-18" x 15"-18", 24" o.c. | YES |
| 5220 | LEG/1 | Liriope 'Emerald Goddess' | Emerald Goddess | 1 gal., 4-5 ppp., full, 18" o.c. | YES |
| 550 | MC/3 | Muhlenbergia capillaris | Muhly Grass | 3 gal., 24"-30" ht., 30" o.c. | YES |
| 1803 | RI/3 | Rhaphiolepis indica 'Alba' | White Indian Hawthorn | 3 gal., 15"-18" ht., 15"-18" apr., 24" o.c. | YES |
| 5170 | TA/1 | Trachelospermum asiaticum | Asian Jasmine | 1 gal., 4-5 ppp, 12" runners, 12" o.c. | YES |
| 300 | TV/1 | Tulbaghia violacea | Society Garlic | 1 gal., 4-5 ppp, 12" runners, 12" o.c. | YES |
| 1679 | VO/3 | Viburnum odoratissimum | Sweet Viburnum | 3 gal., 30" min. ht., 30" o.c. | YES |
| 229 | ZF/3 | Zamia furfuracea | Cardboard Palm | 3 gal., 24"-30" x 24"-30", 30" o.c. | YES |
| 1181 | ZP/3 | Zamia pumila | Coontie | 3 gal., 15"-18" x 15"-18", 24" o.c. | YES |

| SOD | | | | | |
|-----------|---------|------------------|-------------|----------------------|------------------|
| QTY. | ABBREV. | BOTANICAL NAME | COMMON NAME | SIZE & SPECIFICATION | FLORIDA FRIENDLY |
| 68,000 SF | SOD | Paspalum notatum | Bahia Sod | solid sod | YES |

LANDSCAPE NOTES:

- ALL PLANT MATERIAL SHALL BE FLORIDA GRADE NO. 1 OR BETTER AS SPECIFIED IN "GRADES AND STANDARDS FOR NURSERY PLANTS", PARTS 1 AND 2, BY DIVISION OF PLANT INDUSTRY, FLORIDA", DEPARTMENT OF AGRICULTURE AND CONSUMER SERVICES, AND SHALL CONFORM TO CURRENT AMERICAN ASSOCIATION OF NURSERYMEN STANDARDS FOR NURSERY STOCK, LATEST EDITION.
- THE LANDSCAPE CONTRACTOR SHALL BE RESPONSIBLE FOR VERIFICATION OF QUANTITIES IN THE PLANT LIST. IN THE EVENT OF A CONFLICT BETWEEN QUANTITIES ON THE PLANT LIST AND THE PLANS, THE PLANS SHALL CONTROL AND THE DISCREPANCY SHALL BE BROUGHT TO THE ATTENTION OF THE LANDSCAPE ARCHITECT PRIOR TO BID. ANY DEVIATION FROM THESE PLANS MUST BE APPROVED BY THE LANDSCAPE ARCHITECT OR OWNER'S REPRESENTATIVE.
- CONTRACTOR IS RESPONSIBLE FOR COMPLIANCE WITH ALL APPLICABLE BUILDING CODES, ORDINANCES AND LOCAL REGULATIONS. THE CONTRACTOR SHALL BE RESPONSIBLE FOR OBTAINING ALL NECESSARY PERMITS TO PERFORM THE WORK.
- THE LANDSCAPE CONTRACTOR IS RESPONSIBLE FOR INSPECTION OF EXISTING CONDITIONS AND PROMPTLY REPORTING ALL DISCREPANCIES AND IMPROPER CONDITIONS (WETNESS, MUCK, DEBRIS, ECT) TO LANDSCAPE ARCHITECT PRIOR TO BIDDING. CONTRACTOR IS RESPONSIBLE FOR SOIL ANALYSIS PRIOR TO INSTALLATION OF PLANTINGS, AND IS RESPONSIBLE FOR ALL SOIL AMENDMENTS TO CONFORM TO SPECIFICATIONS.
- THE LANDSCAPE CONTRACTOR SHALL ACQUAINT HIMSELF WITH ALL CIVIL DRAWING AS THEY RELATE TO PAVING SITE GRADING, AND ALL UTILITIES, (INCLUDING WATER, SEWER AND ELECTRICAL SUPPLY) TO PRECLUDE ANY MISUNDERSTANDING AND ENSURE TROUBLE FREE INSTALLATION. THE EXACT LOCATION OF ALL EXISTING STRUCTURES, UNDERGROUND UTILITIES, EXISTING UNDERGROUND SPRINKLERS AND PIPE MAY NOT BE INDICATED ON DRAWINGS. THE CONTRACTOR SHALL CONDUCT HIS WORK IN A MANNER TO PREVENT INTERRUPTION OR DAMAGE TO EXISTING SYSTEMS WHICH MUST REMAIN OPERATIONAL. THE CONTRACTOR SHALL PROTECT UTILITY SERVICES WHICH MUST REMAIN OPERATIONAL AND SHALL BE RESPONSIBLE FOR THEIR REPLACEMENT IF DAMAGED BY HIM.
- ALL PLANTING BEDS SHALL RECEIVE A 3" LAYER (1" OVER ROOTBALL) OF FINE BARK MULCH.
- THERE ARE TWO (2) FORCE MAINS IN THE 20 FT. EASEMENT ALONG THE EASTERN PROPERTY LINE. THE TREES TO BE PLANTED IN THIS EASEMENT SHALL BE FIELD ADJUSTED SO AS NOT TO BE LOCATED DIRECTLY ON TOP OF THE FORCE MAINS. IN ADDITION, A ROOT BARRIER SHALL BE USED AS REQUIRED ADJACENT TO THE FORCE MAINS WHEN APPROPRIATE. ALSO, ANY NEW TREES (INCLUDING STREET TREES) THAT ARE LOCATED WITHIN 10 FT. OF SIDEWALKS SHALL HAVE A ROOT BARRIER INSTALLED ADJACENT TO THE SIDEWALK AND/OR EXISTING UTILITIES.